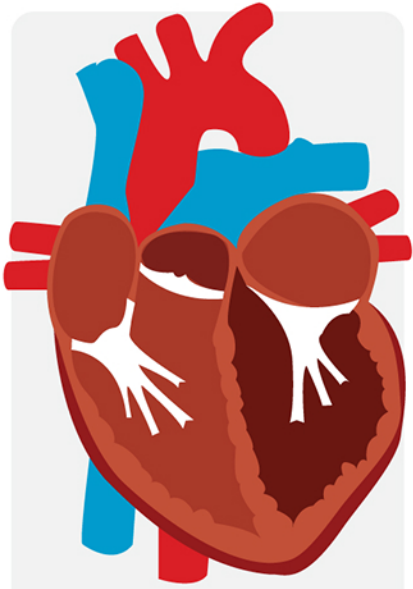
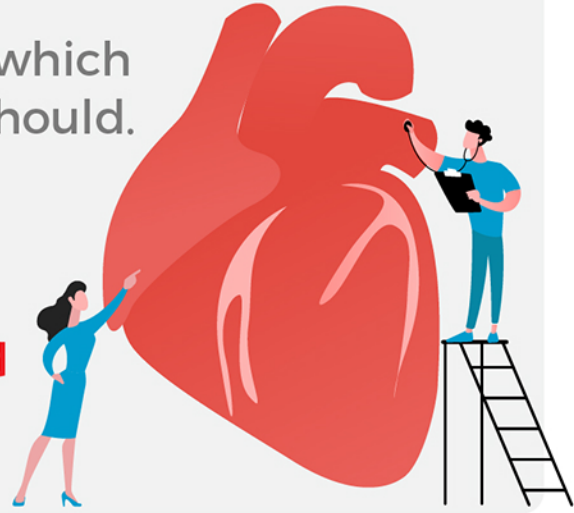


HFrEF vs. HFpEF

HEART FAILURE - a condition in which the heart does not pump blood as it should.

Specific types of heart failure include:

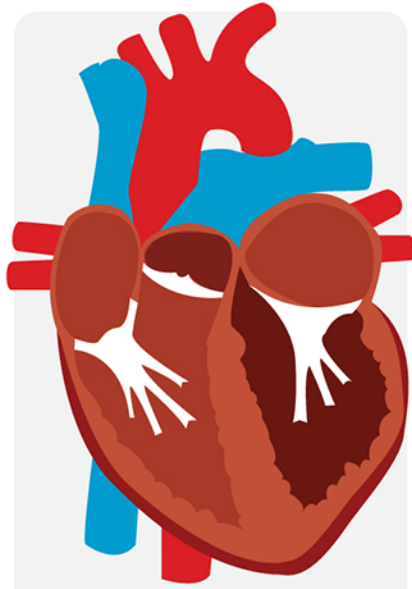
- Reduced ejection fraction (HFrEF) and
- Preserved ejection fraction (HFpEF)



HFrEF

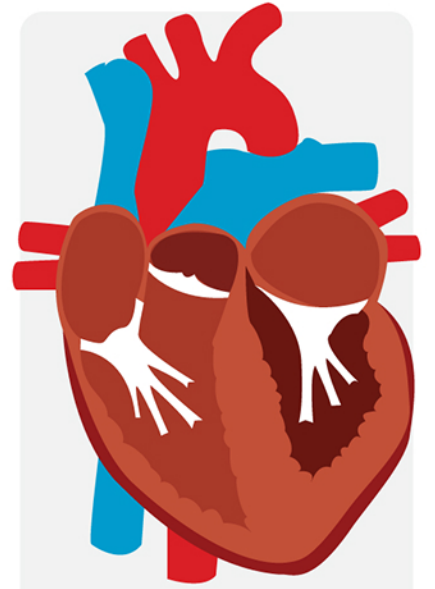
Systolic Heart Failure

- Less blood pumped out of ventricles
- Weakened heart muscle



NORMAL

Heart Function



HFpEF

Diastolic Heart Failure

- Less blood fills the ventricles
- Stiff heart muscle

Risk Factors

HFrEF

Volume overload

Myocarditis

Myocardial infarction

Obesity

Hypertension

Diabetes

Kidney disease

HFpEF

Inflammation

Common obstructive pulmonary disease

Age

CHART™ as a breakthrough technology can detect:

- Heart Failure (HF): HFpEF, HFmEF, and HFdEF.
- Heart Valve Diseases: AS, MS, AR, MR, TR...
- Early onset of CVD.

Cardio-HART™

Breakthrough cardiac diagnostics for the early detection of Cardio-Vascular Disease [CVD], Heart Failure [HF], and all Heart Valves diseases [HVD].

Cardio-Phoenix.Inc
www.cardiophoenix.com

